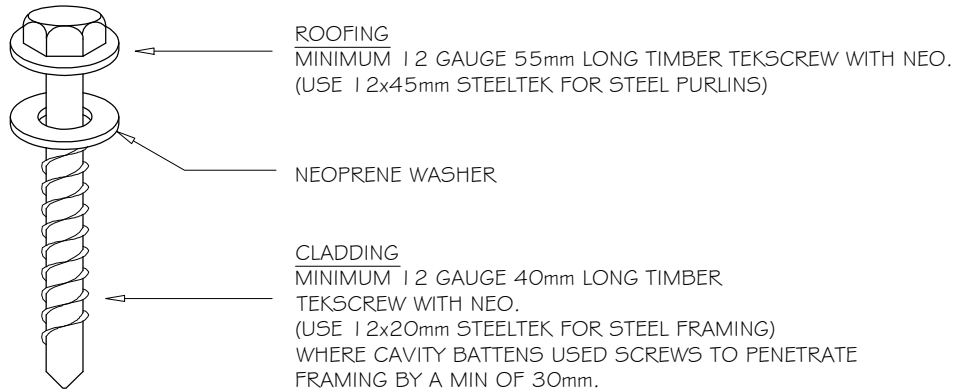


RESIDENTIAL TRUE OAK® CORRUGATE FIXINGS AND SHEET LAP

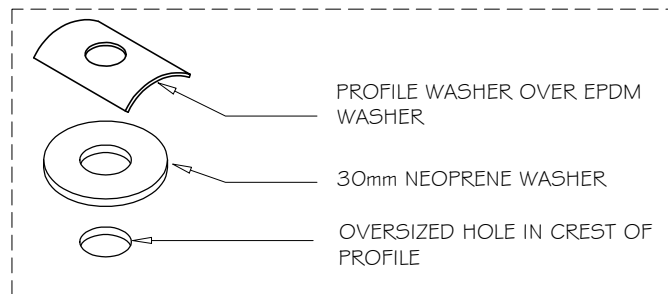
DETAIL NO. RTCR008A
 DATE DRAWN 25/05/14
 FILE REFERENCE RI-RTCR008A.DWG



LINE OF SITE AND
 PREVAILING WEATHER
 DIRECTION RELATIVE TO LAPS
 WHERE PRACTICABLE



CORRECT WAY TO LAP SHEETS
 1:5



WHERE REQUIRED
 FOR EXPANSION OR
 WIND UPLIFT IN
 ROOFING APPLICATION

TYPE OF FIXING TRUE
 OAK® CORRUGATED
 METAL ROOFING

TRUE OAK® CORRUGATED SPACING OF FIXINGS

APPLICATION	RIDGE, HIP, VALLEY, AND GUTTER LINE. PERIPHERY ROOF AREAS	(3) REMAINDER OF ROOF
ROOFING	FIX SIDE LAPS AND FIX EVERY SECOND CORRUGATION	REFER www.roof.co.nz
WALL CLADDING	FIX IN THE PAN ADJACENT TO EVERY SIDELAP OVER RIB AND EVERY SECOND PAN	

NOTES:

- These details are generally in compliance with E2/AS1 and/or the NZ Metal Roof & Wall Cladding Code of Practice and in some cases specific details by 'Roofing Industries'.
- The building designer is ultimately responsible to ensure that details used meet the requirements of the NZ Building Code for the specific project.
- Details of the supporting structure including cavity battens are indicative only and are the responsibility of the building designer. For steel framed buildings thermal break cavity battens may be required.
- Underlay selection and building wrap types are the responsibility of the designer. Netting or other support is generally required at roof pitches less than 8 degrees combined with a self supporting paper. At roof pitches of 8° and above where non self supporting paper is used or purlin spacing is in excess of self supporting criteria, netting or other support should be used. Alternative support to netting should be used in severe coastal environments including when aluminium is used.
- These details are for Roofing Industries profile/s as nominated and may not be applicable to other profiles.
- This drawing is the copyright of 'Roofing Industries' and can only be copied or reproduced with their permission.
- Further information can be obtained from the NZ Metal Roof & Wall Cladding Code of Practice www.metalroofer.org.nz or E2/AS1

NOTE:

- (1) SCREW FIXING IS RECOMMENDED FOR TRUE OAK® CORRUGATED PROFILE.
- (2) FIXINGS ARE FOR STEEL BASED MATERIALS. FOR OTHER SUBSTRATES REFER TO TRUE OAK® CORRUGATE PROFILE TECHNICAL SUMMARY ON www.roof.co.nz
- (3) FOR WIND & CONCENTRATED LOAD SPAN DESIGN GRAPHS FOR OPTIONAL FIXING SELECTION & PATTERNS REFER TO TRUE OAK® CORRUGATE PROFILE TECHNICAL SUMMARY ON www.roof.co.nz

©COPYRIGHT DETAIL 2014

