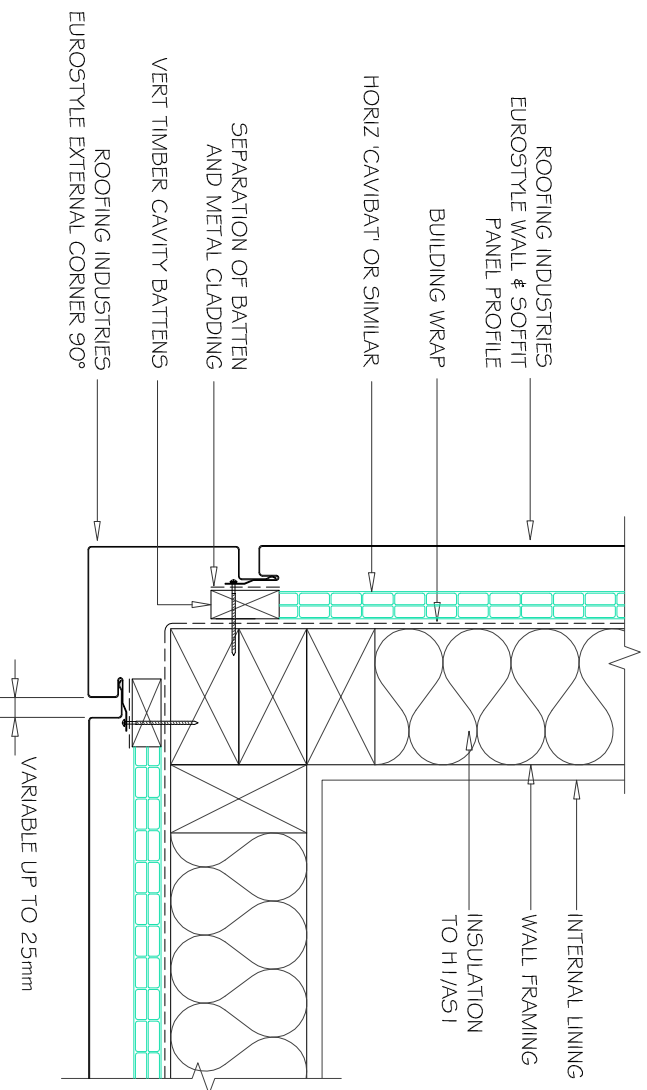


EUROSTYLE WALL & SOFFIT PANEL PROFILE EXTERNAL CORNER FLASHING FOR VERTICAL CLADDING



A
-
1:5 EXTERNAL CORNER VERTICAL EUROSTYLE W.S.P.P.

NOTES:

- These details are generally in compliance with the NZ Metal Roof & Wall Cladding Code of Practice and in some cases specific details by 'Roofing Industries'. Eurostyle falls outside the criteria of E2/A5.1 & this document is therefore not applicable
- The building designer is ultimately responsible to ensure that details used meet the requirements of the NZ Building Code for the specific project.
- Details of the supporting structure are indicative only and are the responsibility of the building designer.
- Underlay selection and building wrap types are the responsibility of the designer.
- These details are for Roofing Industries profiles as nominated and may not be applicable to other profiles.
- This drawing is the copyright of 'Roofing Industries' and can only be copied or reproduced with their permission.
- Further information can be obtained from the NZ Metal Roof & Wall Cladding Code of Practice www.metlroofer.org.nz or E2/A5.1

DETAIL NO. EWSP003A

DATE DRAWN 27/1 0/09

FILE REFERENCE R1-EWSP003A.DWG

NOTES:

1. CAVITY BATTENS CONTAINING CORROSIVE MATERIAL MUST BE SEPERATED FROM METAL CLADDING BY DFC, BUILDING WRAP, PVC OR PAINTING.
2. FOR FIXING METHODS REFER TO SPECIFICATIONS.
3. THIS DETAIL TO BE CONFIRMED BY ROOFING INDUSTRIES TECHNICAL DEPT PRIOR TO USE.

©COPYRIGHT DETAIL 2009

